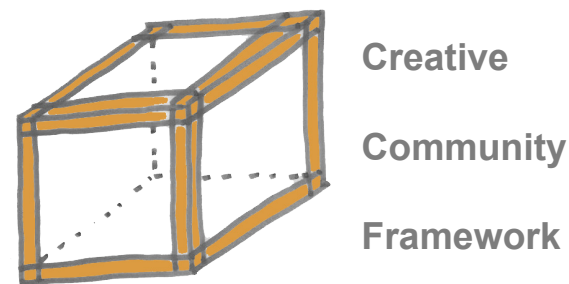


THE CREATIVE COMMUNITY FRAMEWORK
“Creative Together”



The town of Reading is growing and developing but the creative arts are often neglected when planning new developments. The current Reading museum containing the John Madejski Gallery, is not open on Mondays and Sundays, therefore closing off the gallery at prime times for certain generations to access the art within. Also, there are currently only two shops selling art and no facilities which provide a means to create or learn about art and the creative industries. The Creative Community Framework (CCF) provides this hands on connection and the opportunity for anyone to be creative.

The CCF is made up of a collection of spaces which occupy the roof of the now neglected Friars Walk shopping mall. It provides the axial street, workshops and community zones as a catalyst for artists, teachers, creators and individuals of all generations and cultures to come and be “creative together”.

Natural growth of the building occurs through the addition of cross laminated timber panels forming further studios, therapy spaces, seminar rooms, workshops, gallery spaces and a well-being garden onto the framework’s grid system. By inhabiting the roof of Friars Walk mall and providing a new creative hub within the town, it will encourage new occupants into the existing disused retail spaces, and in doing so will revive Friars Walk to be the vibrant area it once used to be.

Precedents



A Thousand Yards Pavilion - Penda Architecture
Building within a grid



A Thousand Yards Pavilion - Penda Architecture
Building within a grid



UAL, Central St Martins - Stanton Williams
Interior streets



Instant City: Living Air Right - Beomki Lee
Building on top of the existing city

Existing Site Photos



Front View



West Approach



East Approach

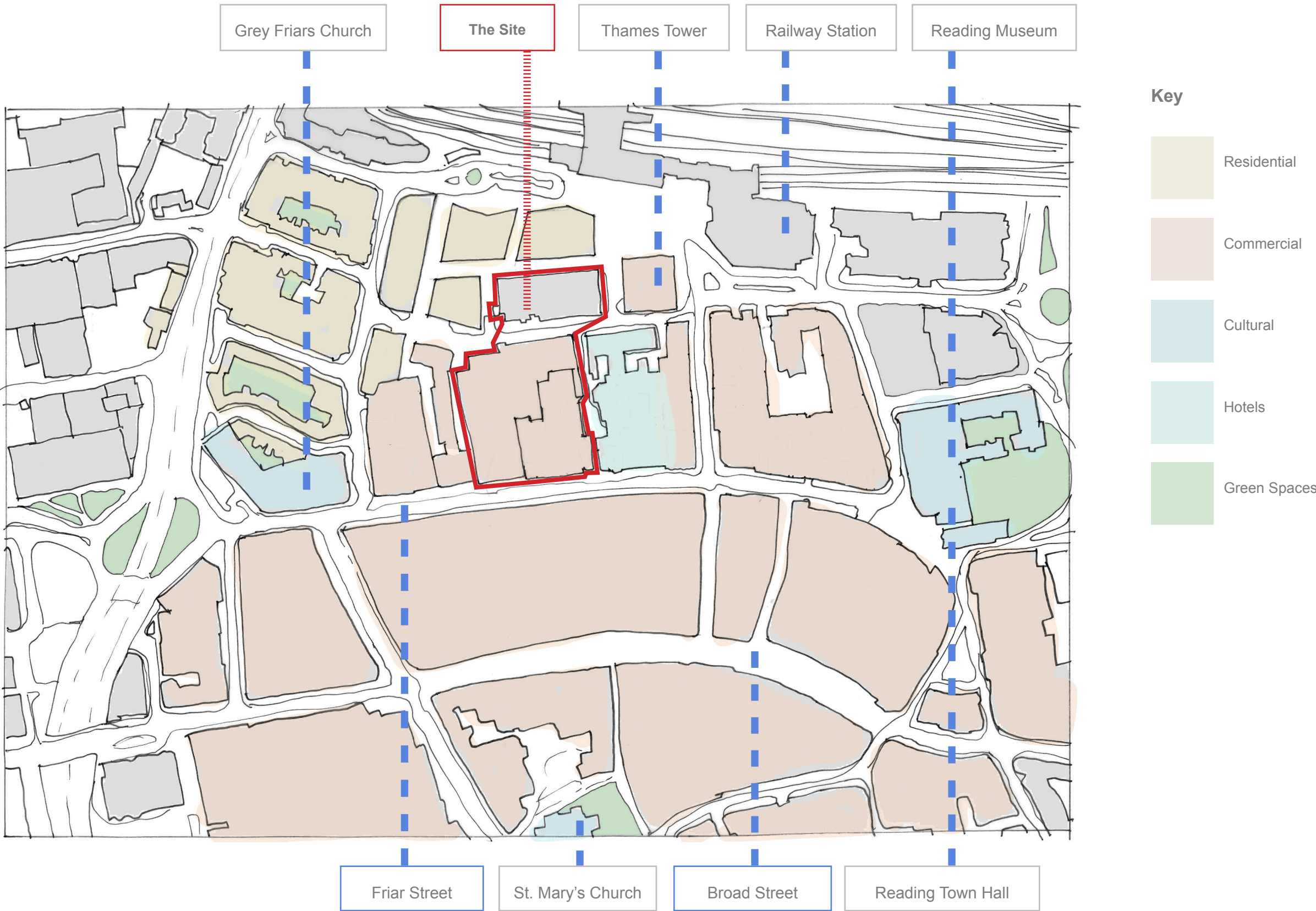


Roof View

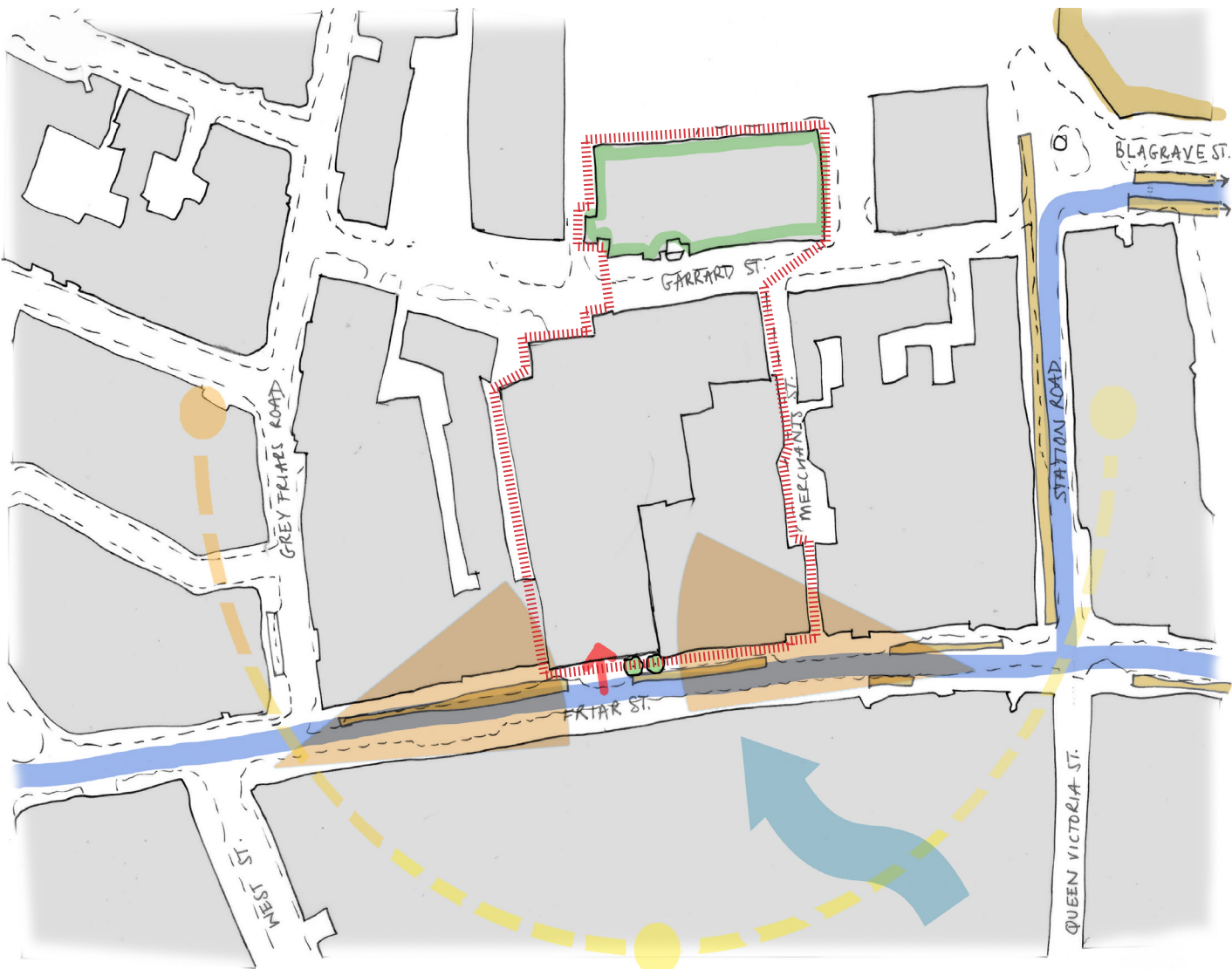
Existing Elevation on Friars Street



Site Context



Site Analysis

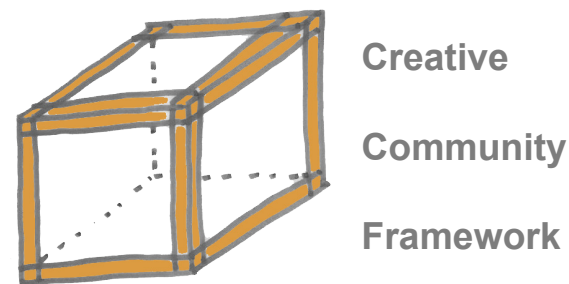


Parti Diagram



THE CREATIVE COMMUNITY FRAMEWORK

“Creative Together”



Construction

Cross Laminated Timber Panels

The Building is made from cross laminated timber (CLT) panels which are assembled on a 2.6m grid, due to the size constraints of a truck bed and transportation limitations. They can be arranged in any configuration to fit next to or on-top of each other, and due to the strength of cross laminated timber the panels can also be cantilevered off of one another. This flexible construction allows for any potential uses.

The street follows the grid system with Kalwall, translucent panels of shatter proof fiber-reinforced polymer face sheets and translucent insulation, providing balanced daylight into the street. This type of lighting is also ideal for displaying artwork and exhibiting the works produced within the building. When adding a space directly off the street, the Kalwall panels can then be replaced by the CLT panels. The panels are prefabricated off-site and bespoke to the individual use of the space they are forming, with windows and door holes already cut out. Additional benefits of CLT panels include a shortened on-site build programme, which in turn reduces disruption to current occupants and neighbours and reduces on-site labour costs.

Precedents



Republic - Studio RHE



Pixel Facade - Mengyi Fan

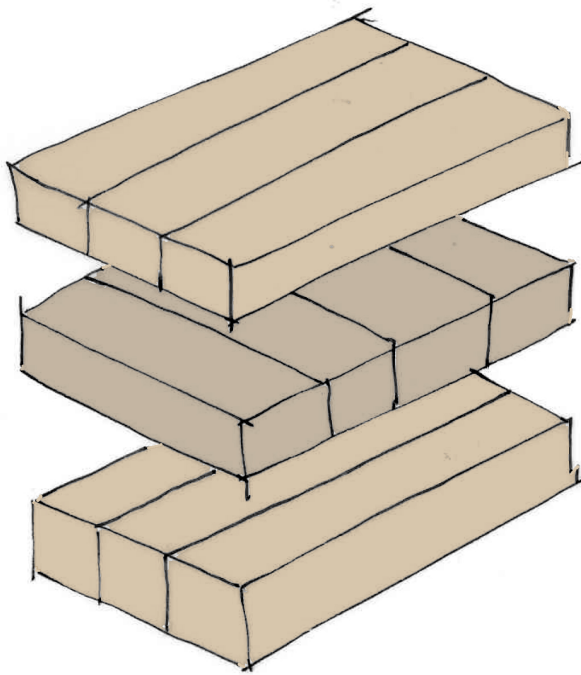


International House - TZANNES

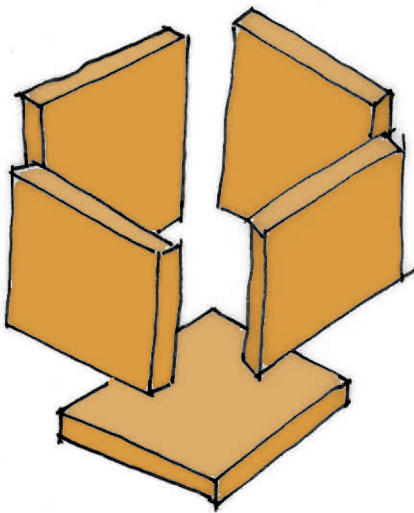


Kalwall glazing system : City and Islington College art studios

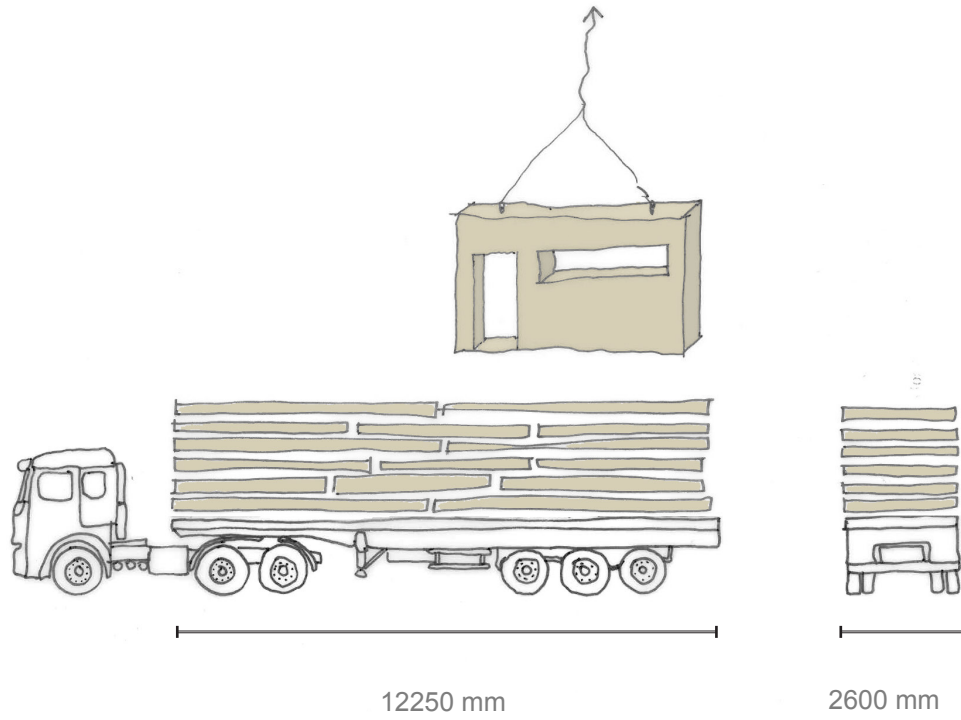
Construction Process



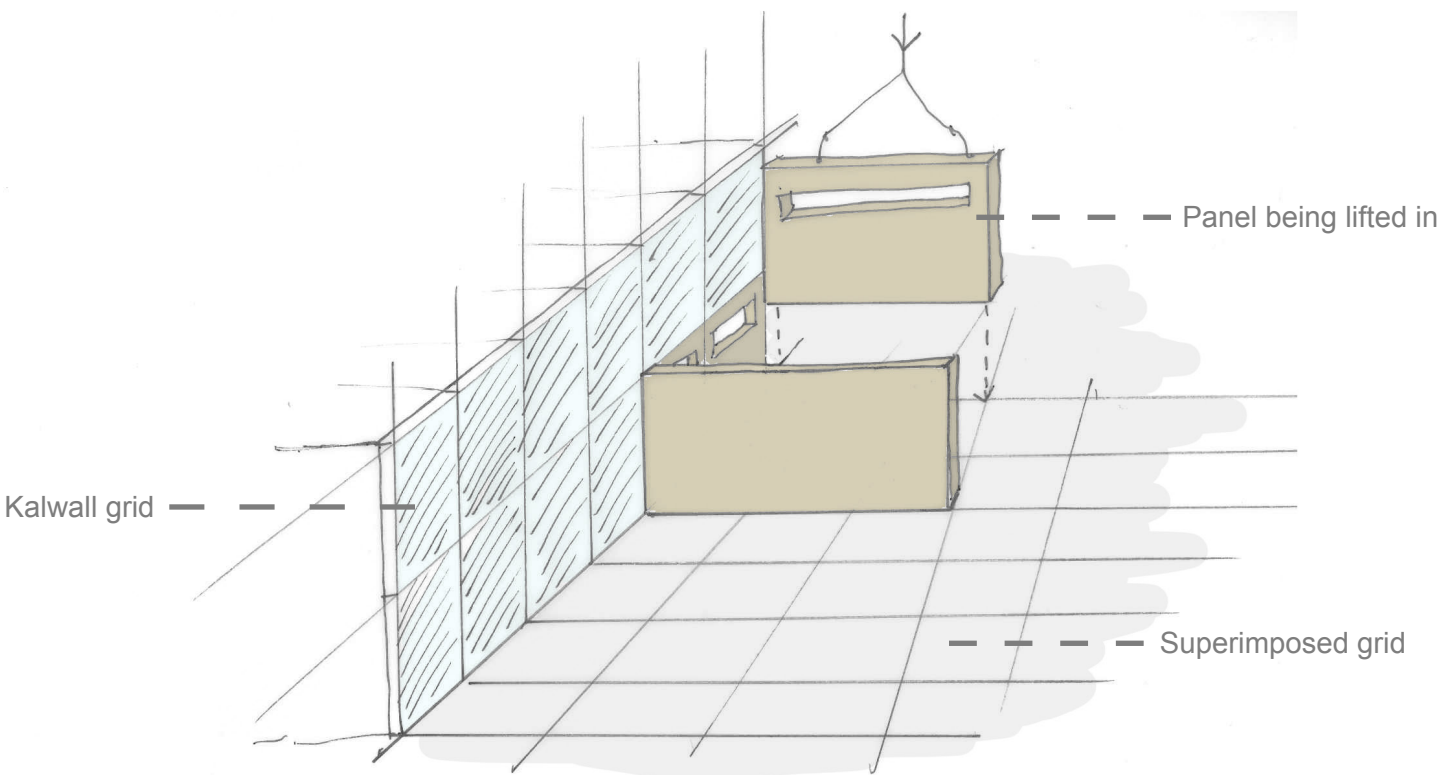
Cross laminated timber panel construction



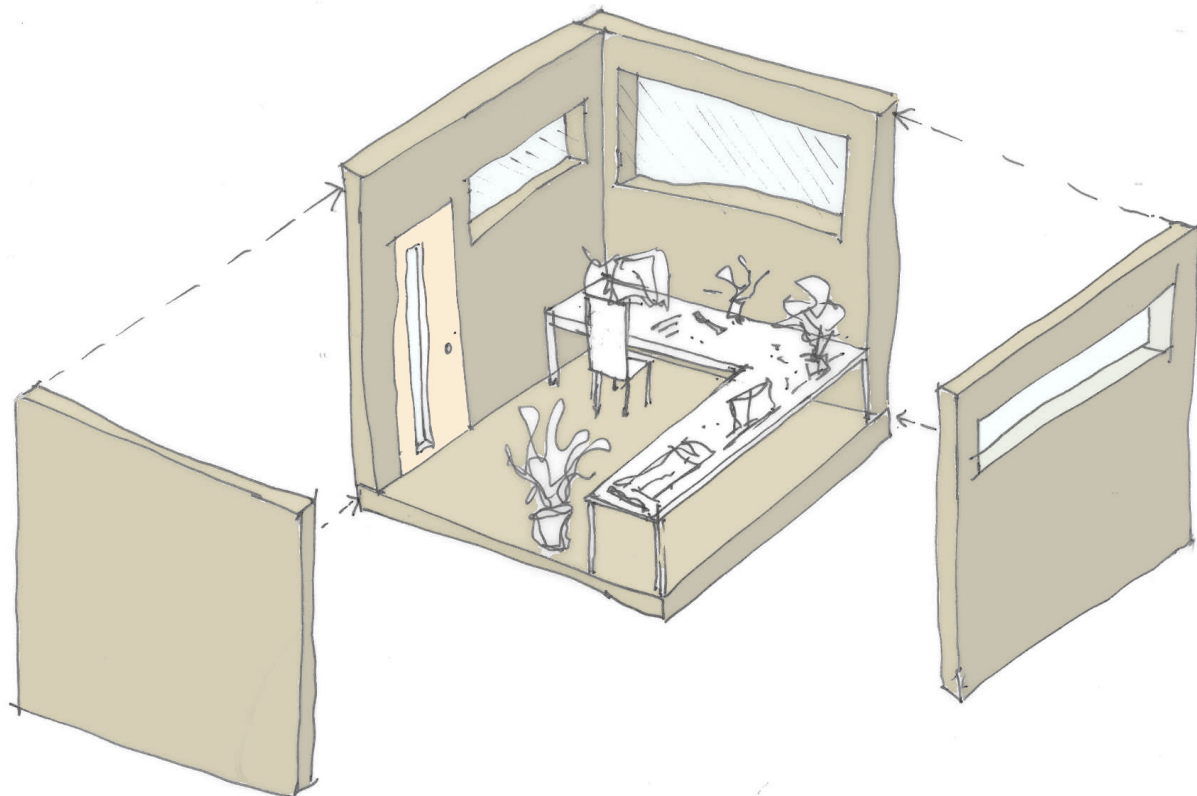
Cross laminated t imber panels



Cross laminated timber panels transported on trucks

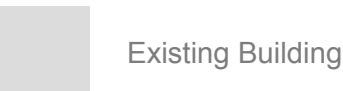


Panels being lifted into place on site using cranes



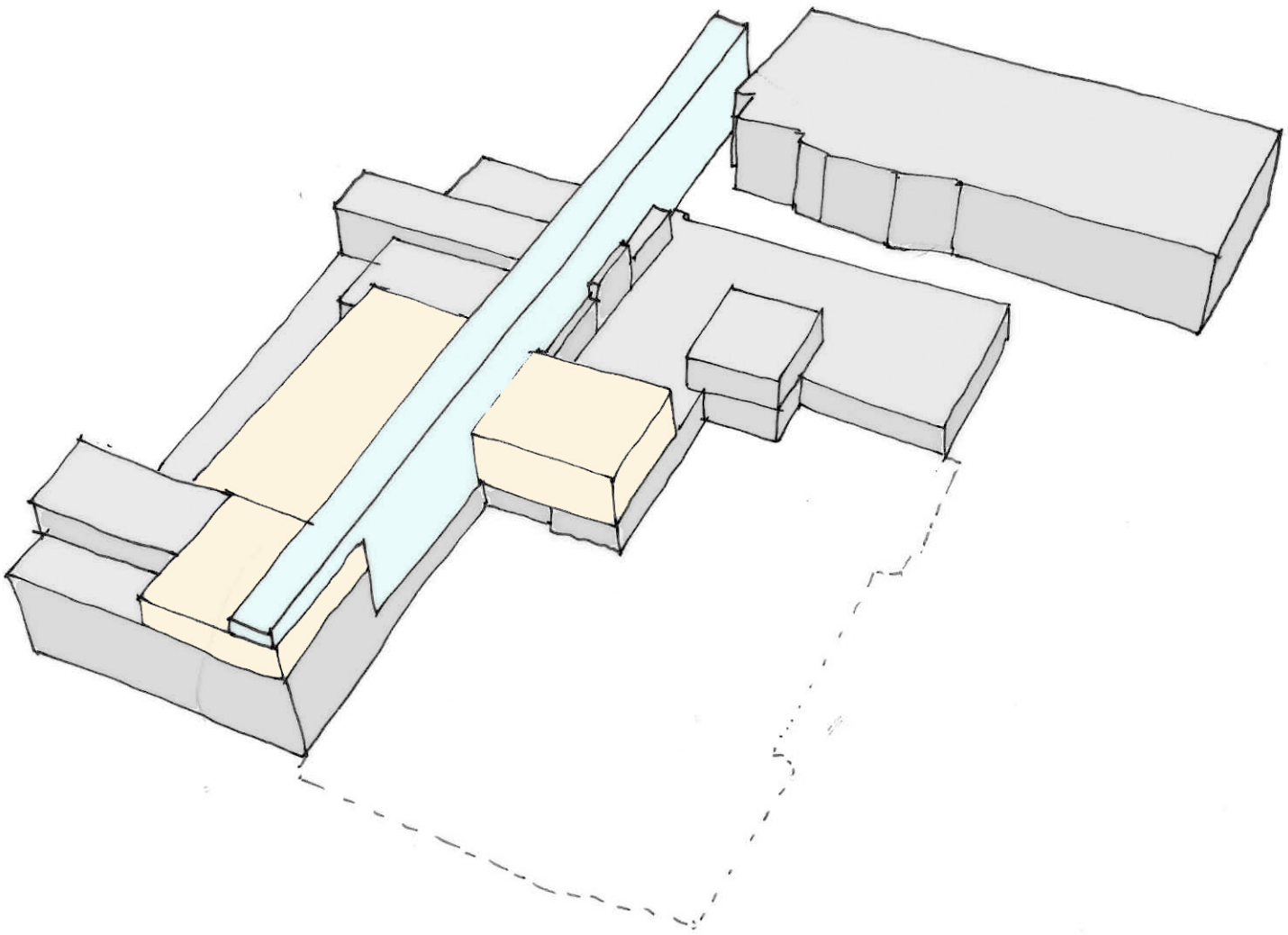
Example studio fit out

Stages of Growth



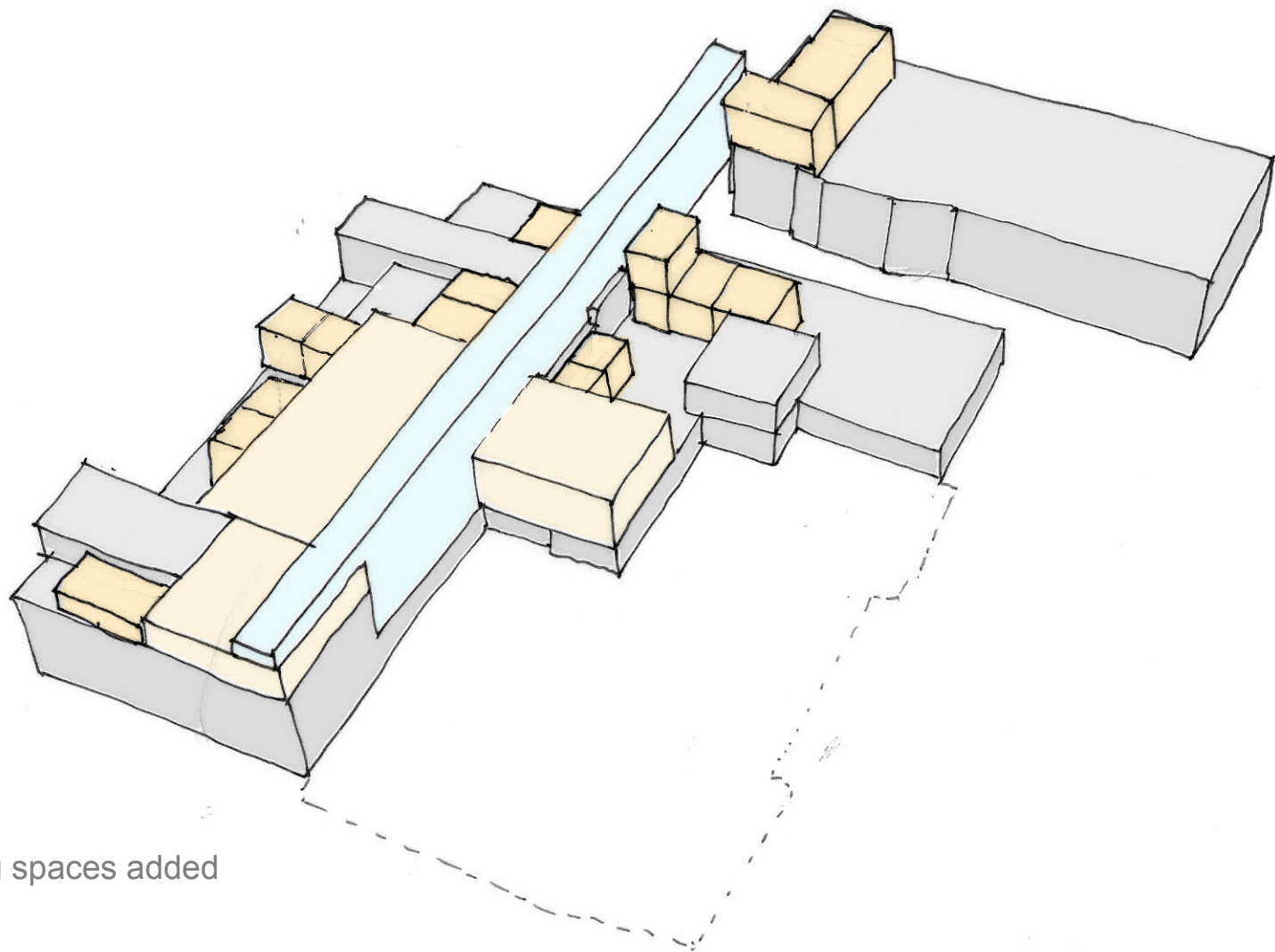
Stage 1

Street, workshops and cafe



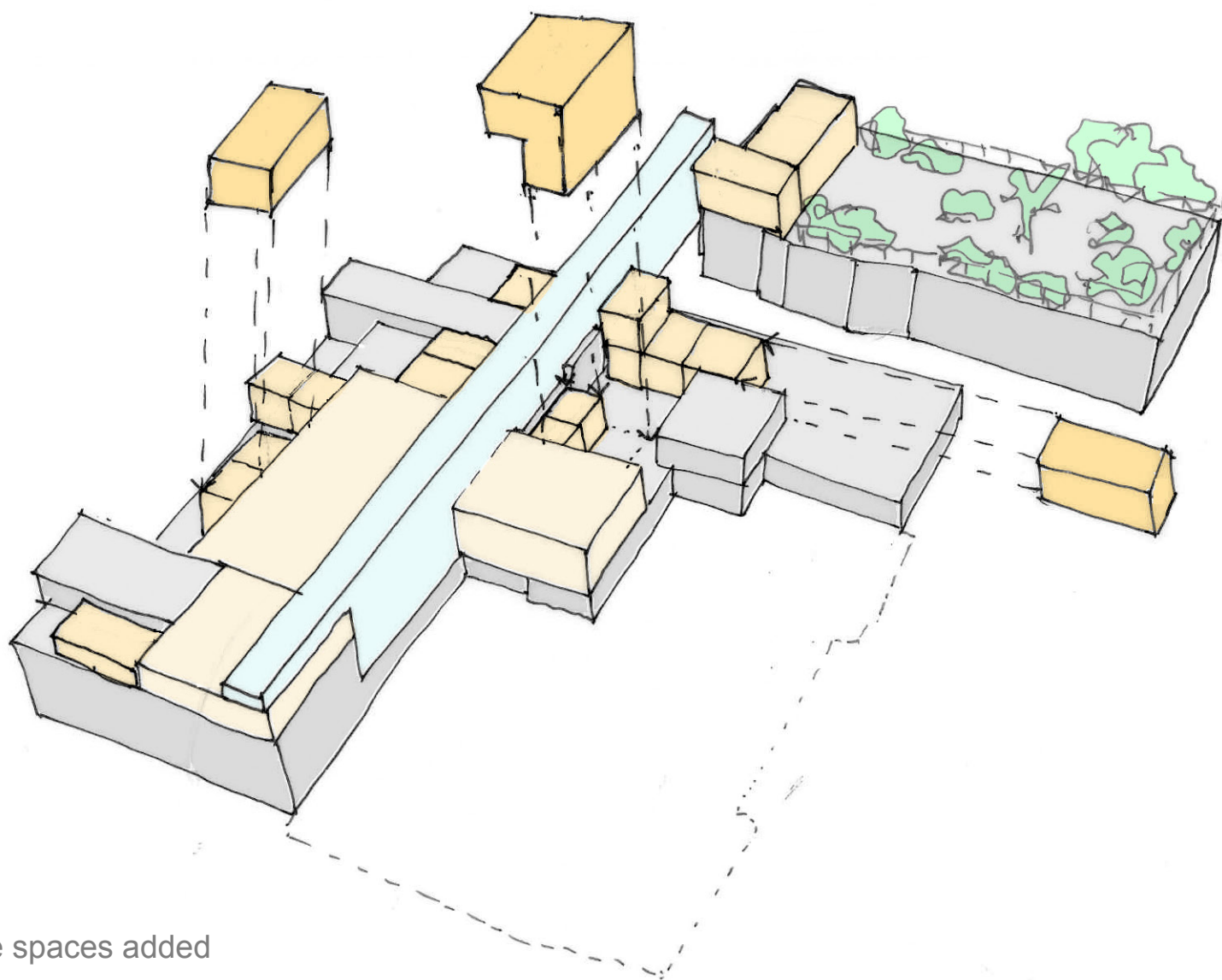
Stage 2

Offices, studios and teaching spaces added

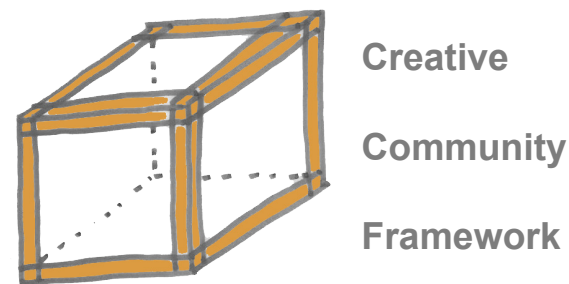


Stage 3

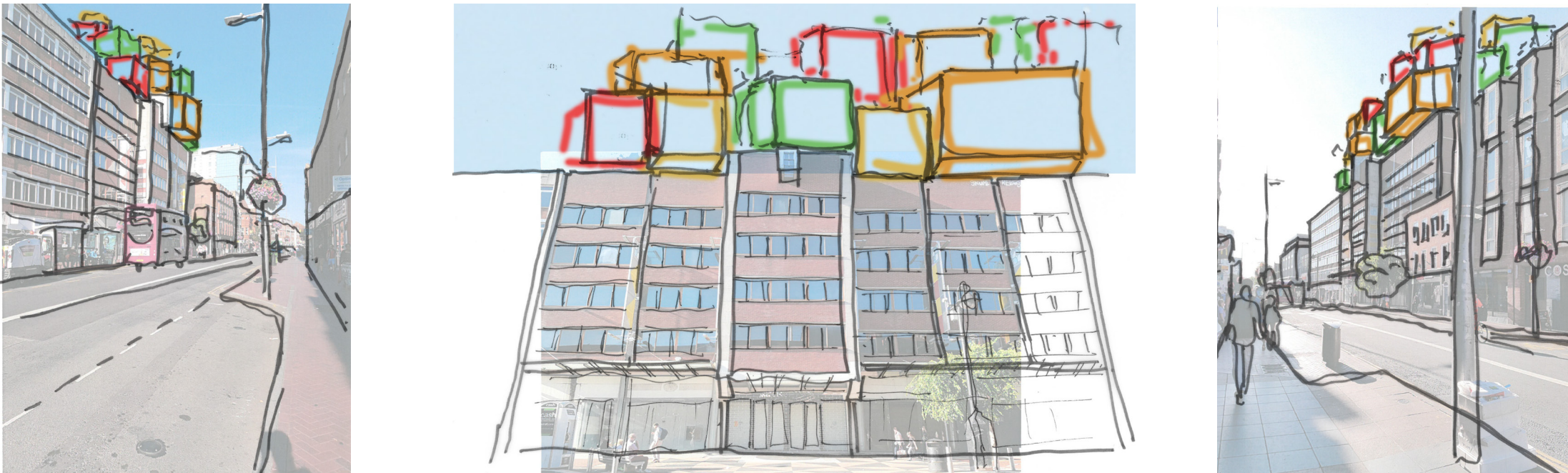
Well-being garden, and more spaces added



THE CREATIVE COMMUNITY FRAMEWORK “Creative Together”



Concept Sketches

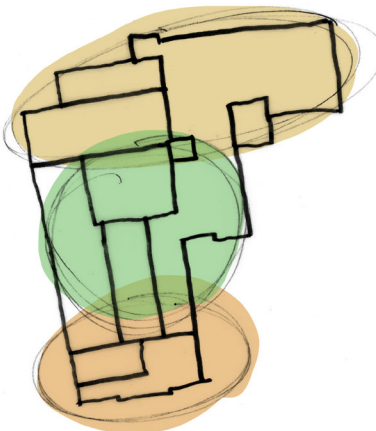


Zoning Programme

North - studios, workshops rooms, therapy rooms, offices and galleries

Core - lecture rooms and learning suites, offices and the workshop

South - cafe, social space and galleries



Proposed Elevation on Friar Street, including Station Hill development behind



Section Through ‘Street’

