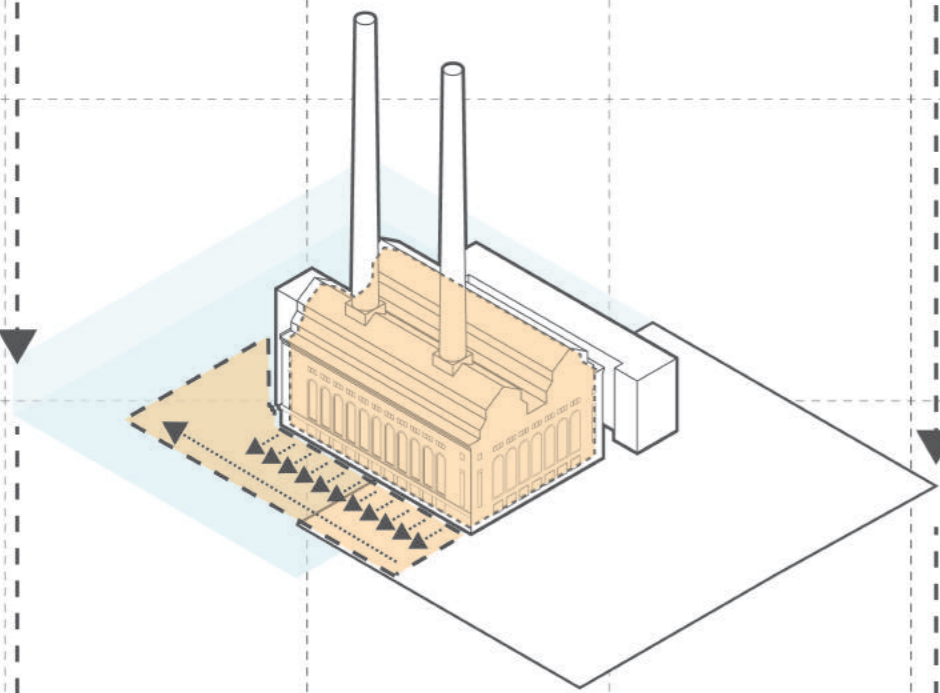
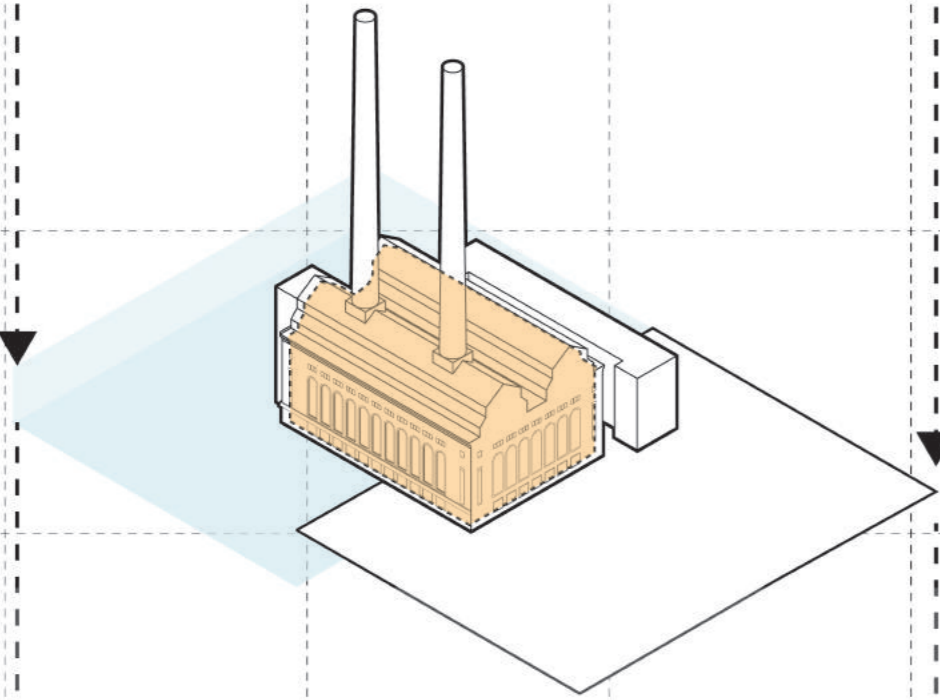
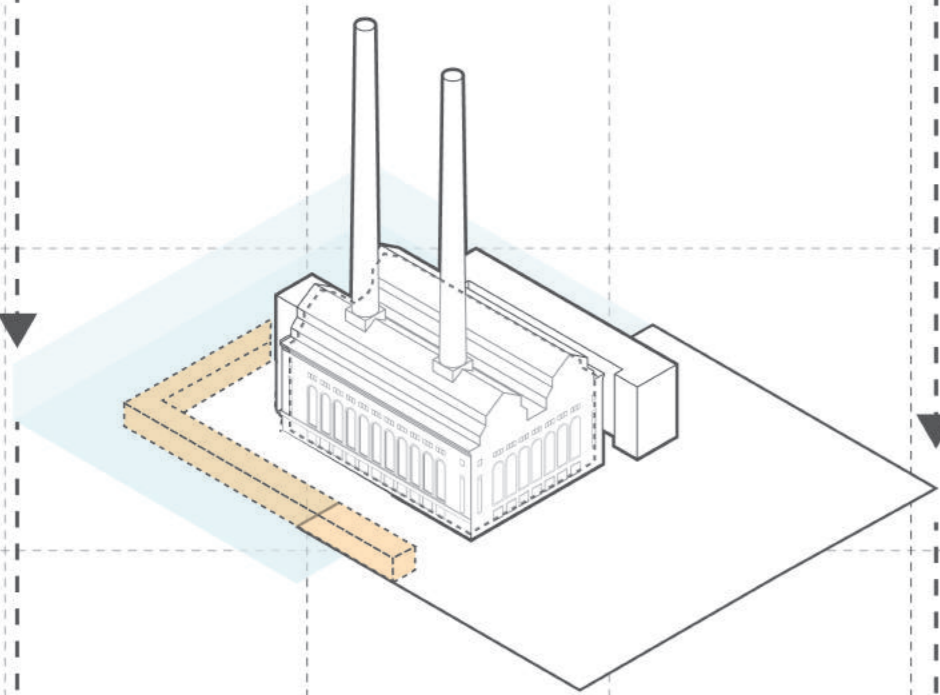


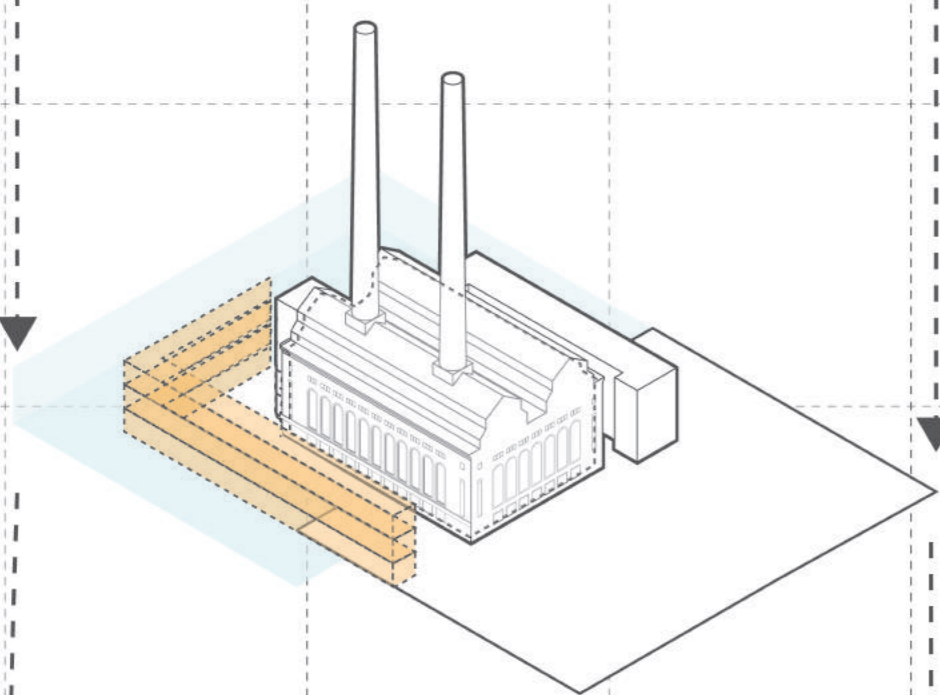
Step 1
Identifying the constraints of the site and what can be achieved inside the existing structure.



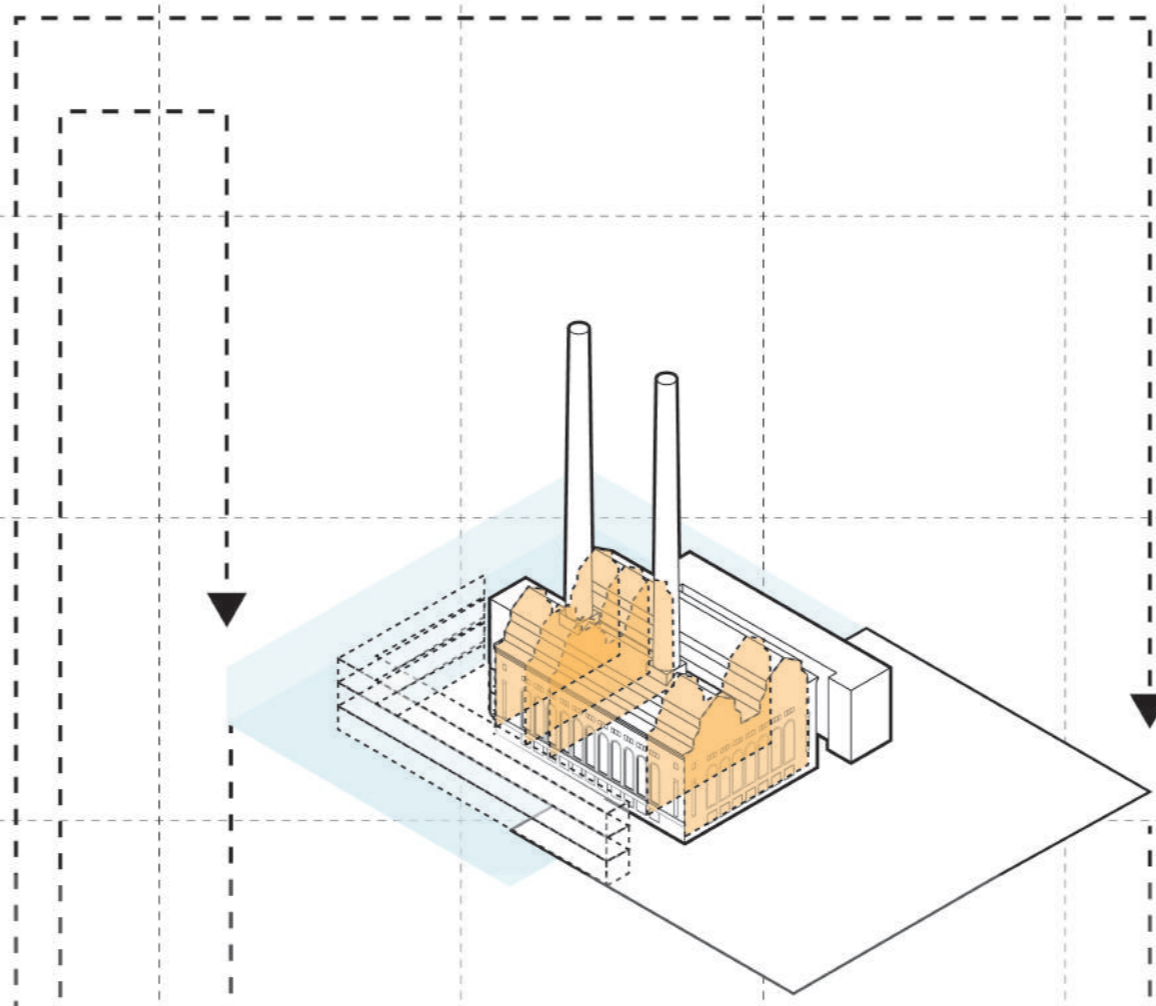
Step 2
extending beyond the site to create a pier market space above the water adding to the industrial nature of the scheme



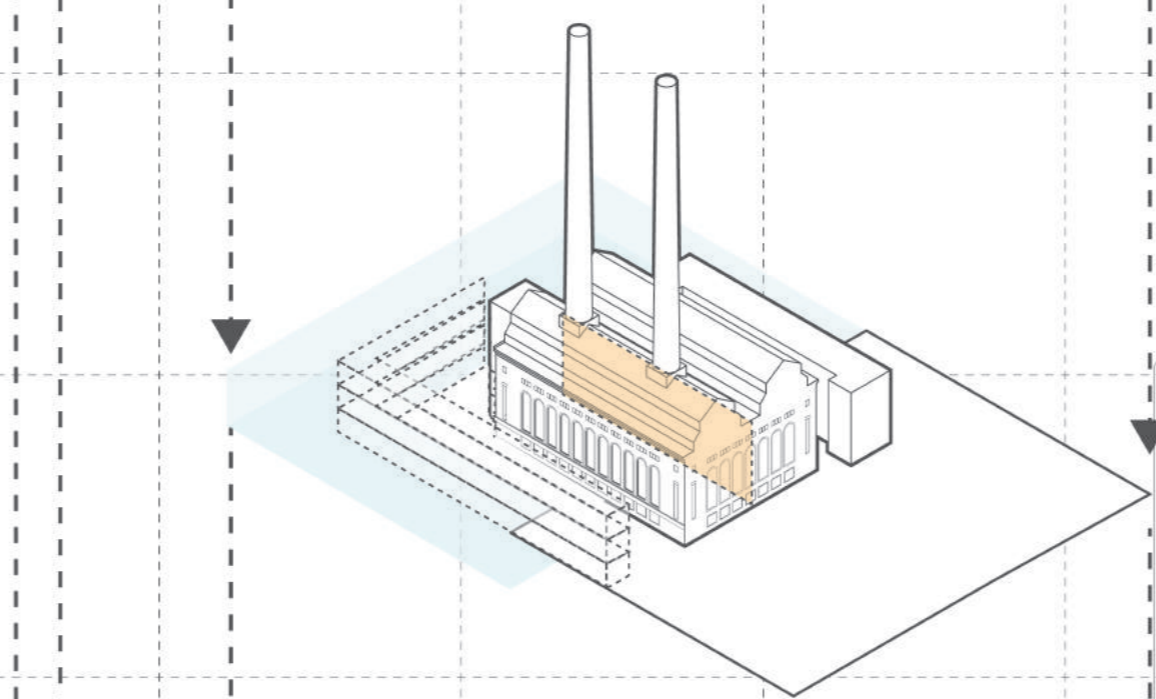
Step 3
Creating a chain of building on the outside of the pier leaving a promenade for people to use and inhabit.



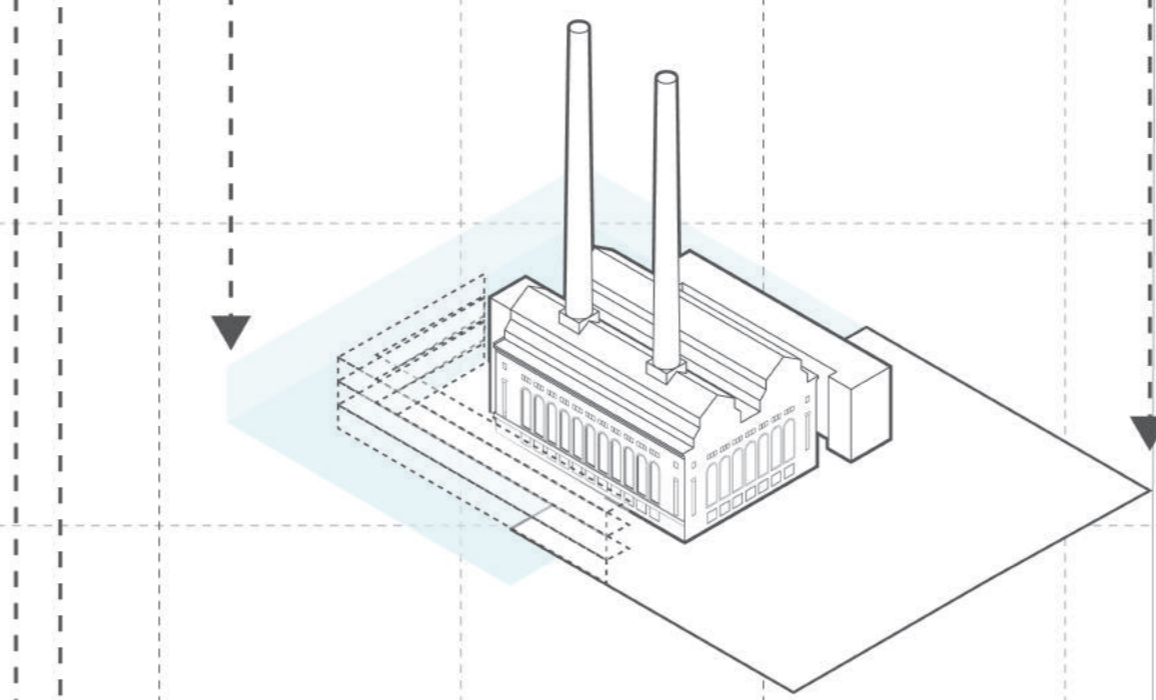
Step 4
stacking building to create a complex and thriving network of pop up shops.



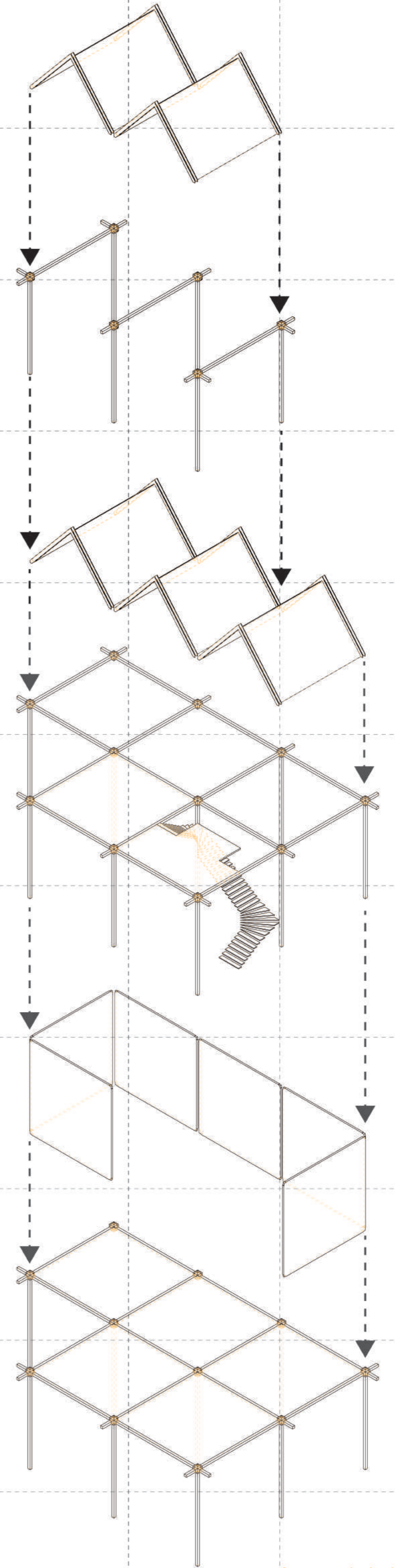
Step 5
Dividing the internal space to place some of the programs inside the space.



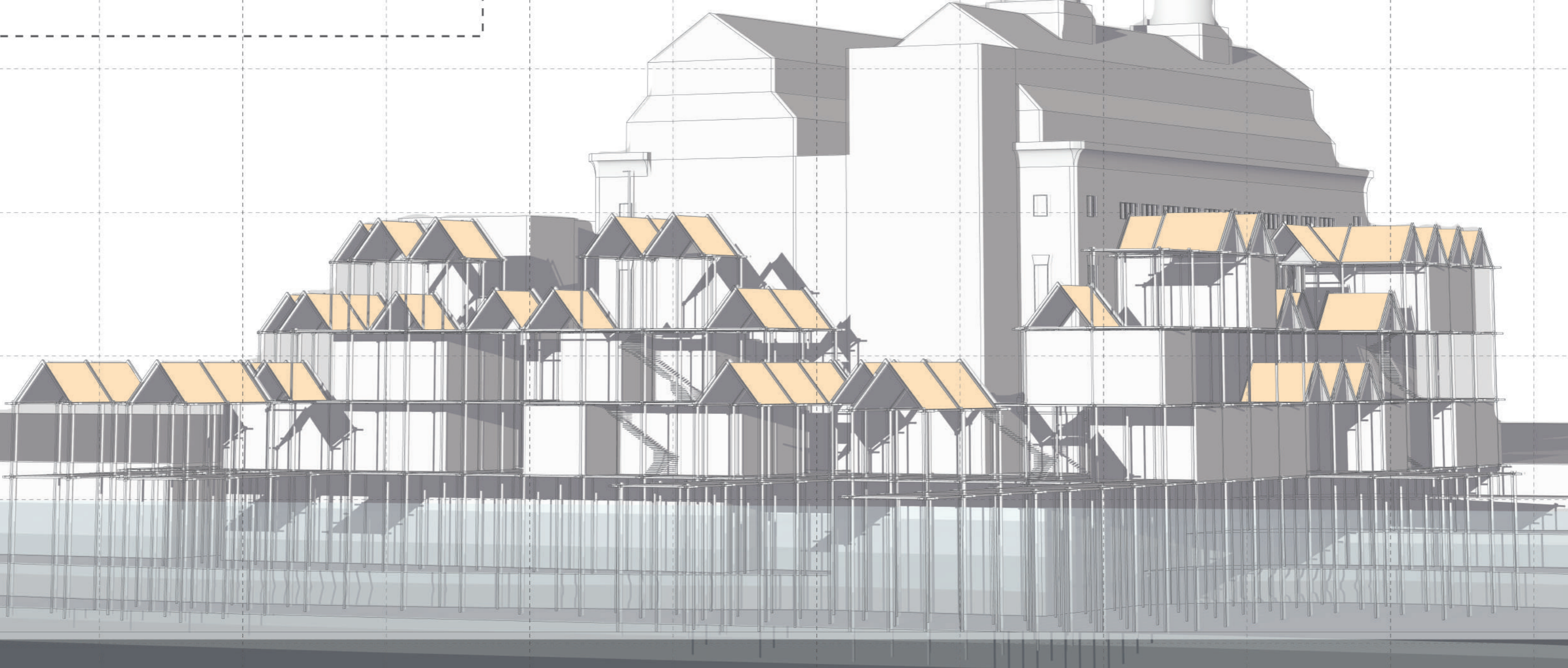
Step 6
3d split the building to add greater complexity of design improving the design.



Step 7
use industrial precedents to design detailing around the space needed



Axometric build up
An example of how floors can be built up and added over time



Perspective
Showing how the design spreads into the water emulating the industrial nature of the project.

Multi level design
The idea for the design is that it can change, evolve and respond to the need of yonkers.

Site Plan
Locating the design on the water front.

West elevation
Illustrating what can be seen from the river.

The Design
The complete design will incorporate all the building in yonkers have fallen in to disrepair and are not able to support themselves the idea is to bring all of these functions in one place.

South elevation
Illustrating the dock section of the design.

